



Sea Level Rise & Climate Resilience:
A Plan for Action

Sea Level Rise & Climate Resilience: *A Plan for Action*

Sean T. Sullivan, Executive Director
sean@tbrpc.org



October 10, 2018

Overview

- Regional framing for resilience
- Tampa Bay Regional Planning Council
- Introduction to the Coalition



October 10, 2018

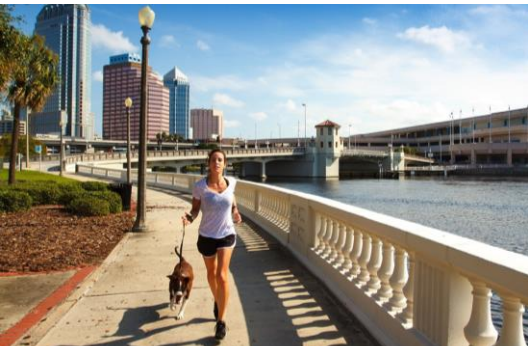
Resiliency is...

- “... the ability to recover from or adjust easily to misfortune or change.” - *Webster’s Dictionary*
- “...the power or ability to return to the original form, position, etc., after being bent, compressed, or stretched; elasticity.” - *Dictionary.com*
- “...an objective of design, maintenance and restoration for buildings and infrastructure, as well as communities. It is the ability to absorb or avoid damage without suffering complete failure.” - *Wikipedia*



The Region of Tampa Bay Florida

- 5,000 square miles
- 3.6 million residents
- Accounts for 18% of Florida's GDP
- 16th largest metro economy in the U.S. (\$157 Billion)
- Dense coastal development
- Rich coastal resources



Interconnected & Interdependent

- Transportation systems
- Water management
- Critical habitat & aquatic systems
- Communities & economies
- Shared vulnerabilities



Who We Serve

- 6 Counties
- 21 Municipalities
- 13 Gubernatorial Appointees
- 3 Ex-Officios



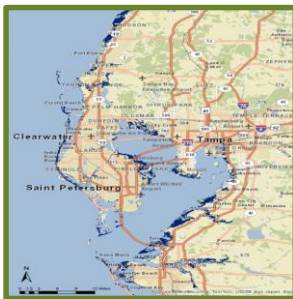
Leading the Way in Resiliency Planning Since 1985

- The first hurricane evacuation study in the nation
- Sea level rise studies
- Partners in vulnerability assessments
- Florida's first statewide evacuation plan
- Continuity of operation plans for local governments & the business community
- ONE BAY Resilient Communities Working Group



The Cost of Doing Nothing...

Economic Impacts of Sea Level Rise in the Tampa Bay Region



| When Mean Sea Level Increases by | Estimate |
|---|-----------------|
| 2.0 Feet | |
| Value of Submerged Residential Property in 2015 | \$14.9 Billion* |
| Value of Submerged Commercial Property in 2015 | \$1.3 Billion* |
| Cumulative loss of Property Taxes (2020-2060) | \$4 Billion* |
| Job Losses in submerged areas | 17,184 |

- Methodical but selective process
- Meshing GIS with economic data
- Comparing simulations
- As currently assessed, **\$400 billion** of property will be at risk by the end of the century

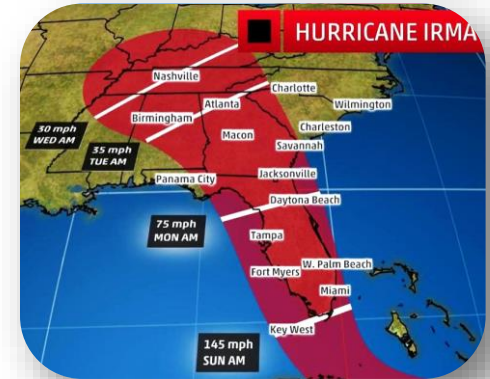
An Initiative of the TBRPC



TAMPA BAY
REGIONAL RESILIENCY COALITION

Genesis

- Initiated in January 2018
- Response to shared challenges
- Voluntary collaboration
- Commitments
 - Policy coordination
 - Common baseline
 - Regional action plan
 - Annual summits



TAMPA BAY
REGIONAL RESILIENCY COALITION

Structure

- Steering Committee of Elected Officials
- Technical Advisory Committee comprised of members of the scientific and planning community
- Workgroups are being established to involve interested parties and the general public
- Communication pathways are being established among committees
- Regional priorities are being identified to include as a minimum: ***Built Environment, Flooding, Government Initiatives, Social Equity, & Transportation***



Organizational Structure



A Plan for Action

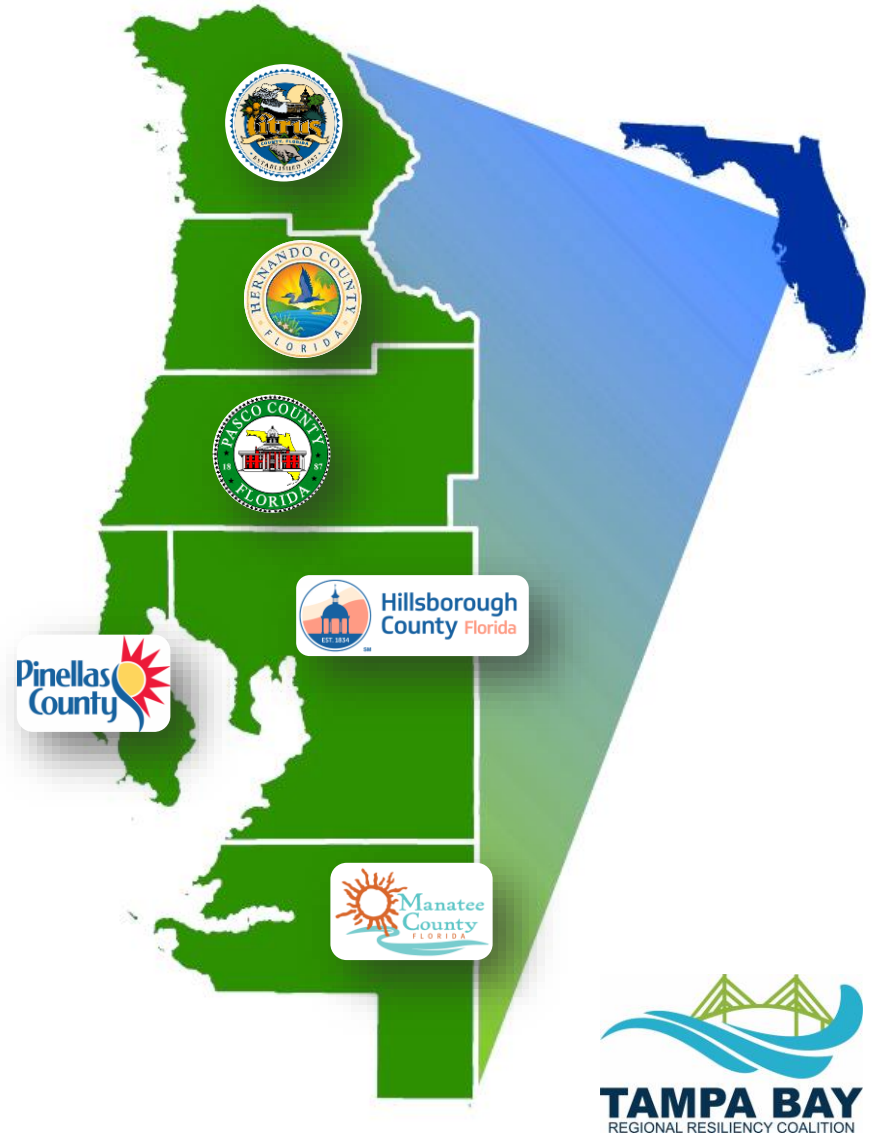
We face the same future and climate uncertainties. We share the same coastal vulnerabilities. Our economies are tightly connected.

This Coalition will provide a formal platform for local governments to:

- Work together to create guidelines for the development of resilient communities
- Learn “**Best Practices**” from each other and from other regions
- Leverage regional resilience efforts, to enhance funding and increase competitiveness for grant funds.

Benefits of a Regional Approach

- ONE region, ONE voice
- Progressive planning
- Leverage resources
- Regional capacity building
- Expand expertise
- Broaden partnerships
- Inspire innovation



Implementation Workshops

TOPICS

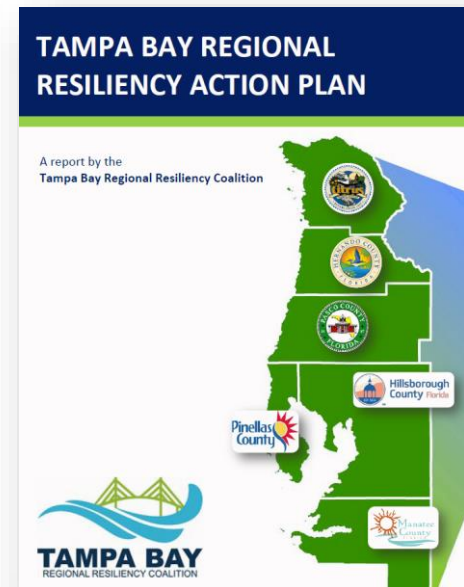
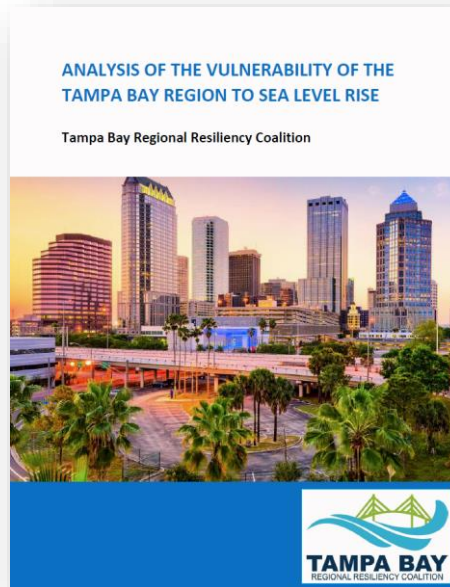
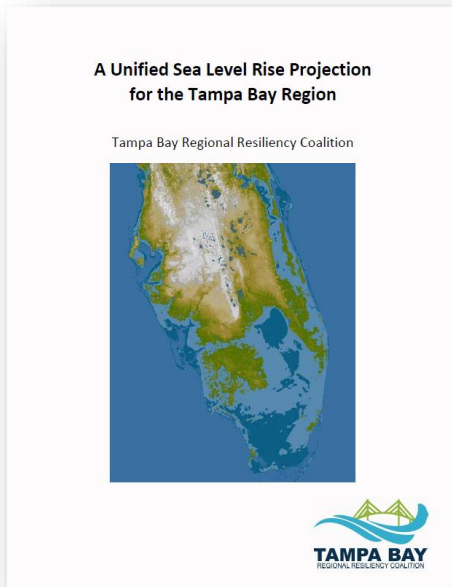
- Sea Level Rise
- Risk Reduction
- Economic Resilience
- Energy Efficient Buildings
- Transportation
- Stormwater
- Water Supply Planning
- Resilient Redesign

PRODUCTS

- Guidance Documents
- Technical Tools
- Resources
- Model Policy



Desired Initial Work Products



Tampa Bay Regional Resiliency Action Plan***

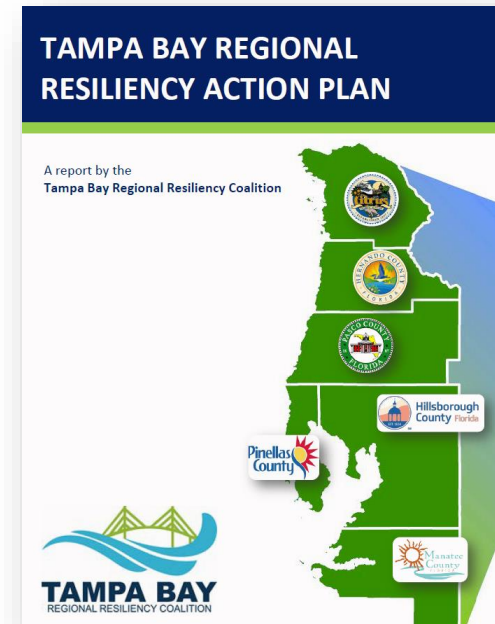


Tampa Bay Regional Resiliency Action Plan

To **integrate** climate adaptation & mitigation into existing systems, through existing processes.

Focus Areas:

- Sustainable Communities & Transportation
- Water Supply, Management & Infrastructure
- Housing & Neighborhood Development
- Natural Systems
- Agriculture & Food Systems
- Energy & Fuel
- Risk Reduction & Emergency Management
- Outreach & Public Policy
- Economic Development





Signing Ceremony

October 8th, 2018

25 Local Governments
have voted to support
this regional effort!

Joint Statement of Regional Collaboration

Partners:

- Counties
- Cities
- Business Leadership
- Economic Development

Commitments:

- Engagement within the business sector
- Joint State & Federal advocacy
- Regional outreach & communications



Questions?

Sean T. Sullivan, Executive Director
sean@tbrpc.org

(727) 570-5151 x16



tbrpc.org